

TREMCO ROOFING SYSTEMS COMPREHENSIVE SOLUTIONS FOR NEW BUILD, REPAIR AND RENOVATION



TREMCO

FULL SERVICE EXPERTISE

FOR YOUR TOTAL PEACE OF MIND

TREMCO understands roofing. Even more importantly, we understand the concerns and needs of building owners.

We recognise their desire to achieve total peace of mind about the integrity and condition of their asset. We also acknowledge their need to ensure that they avoid the costly pitfalls of poor design, inadequate workmanship, or inferior, short-life products.

So, whether for new build or refurbishment, TREMCO provides much more than just products. We provide a *total* Start-to-Finish service.



COMPLETE SOLUTION

TREMCO Roofing Systems are designed to give you a complete solution, and specifically:

For Property Owners

- New or renewed, extended service life for your flat roofs
- Minimal disruption to normal operations during renovation
- Economic life-cycle costs

For Project Specifiers

- Thorough investigation, analysis and expert diagnosis
- Tailored, guaranteed long-term solutions
- Experienced assistance with project implementation

OVER 70 YEARS EXPERIENCE

This unrivalled service is the result of a continuous programme of development - and application experience - spanning more than 70 years. Over this period, TREMCO has successfully investigated and refurbished, or newly installed, millions of square metres of built-up flat roofing. Their longevity is the best testimony to the quality and value of our systems and service.



WHY TREMCO DESERVES YOUR CONFIDENCE

TREMCO is unique. No other company brings greater insight or expertise to built-up flat roof systems. We have invested heavily in research and development, with new laboratories established to develop and prove the technology for even better solutions.

Our extensive experience is applied for your benefit in the following ways:

- We regard every project as unique, requiring a specific, detailed solution
- We seek to resolve the specific problems which affect the protection or refurbishment of your flat roof
- Our systems are comprehensive: we pride ourselves on attention to detail, ensuring that nothing is overlooked
- The technical expertise of our sales team and Technical Services personnel, providing on-site inspections, is at your disposal
- We provide training in the application of our systems for Preferred Contractors' personnel - and monitor application quality
- TREMCO is unique in offering a single point warranty for both materials and labour, providing real confidence in our guarantee

Above all, TREMCO Roofing Systems provide informed solutions - and first class results - which represent the best possible value.

New build or renovation, our overall aim is to establish or restore the waterproofing integrity of your flat roof - and thereby protect it against the adverse consequences of water penetration.

START-TO-FINISH SERVICE

① Consultation

To establish specific needs and objectives

- Includes building requirements, history and client expectations

② Survey

To document and understand any existing physical problems

- Review roof history and design
- Full inspection of flat roof surfaces: visual and infra-red
- Sampling of suspect areas

③ Analysis

To evaluate survey results

- Diagnosing problem areas
- Pinpointing the source and cause of deterioration, whether visible or concealed

④ Design/Specification

To confirm the optimum solution

- Define materials and application skills required
- CAD drawing service

⑤ Implementation

To assist your project progress

- Competitive quotations from TREMCO approved contractors network
- Ensuring fully trained personnel working to agreed method statements and application procedures
- Supported by on-site control and monitoring

⑥ Quality assurance/ On-going commitment

To ensure successful completion and long-term satisfaction

- Technical service on-site inspection
- Single point warranty for installation and materials
- Backed by BS EN ISO 9001: 2000 certification
- Materials and systems independently tested and accredited by BBA and BRE
- Full after sales service

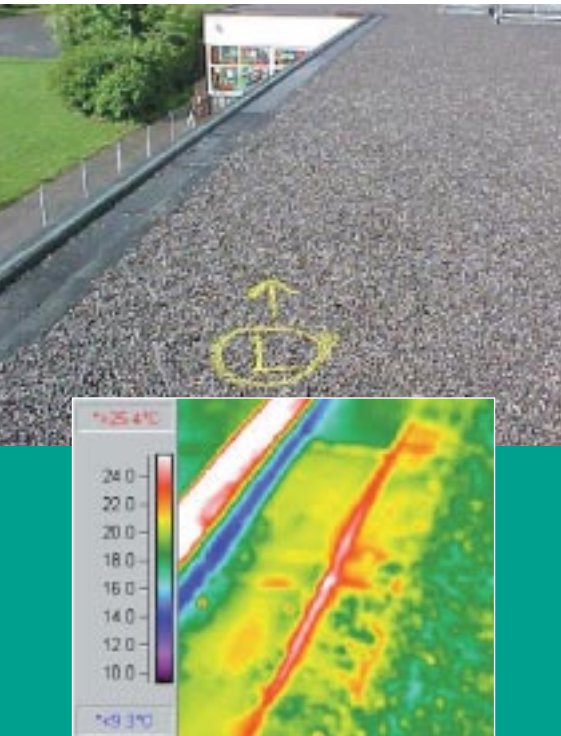
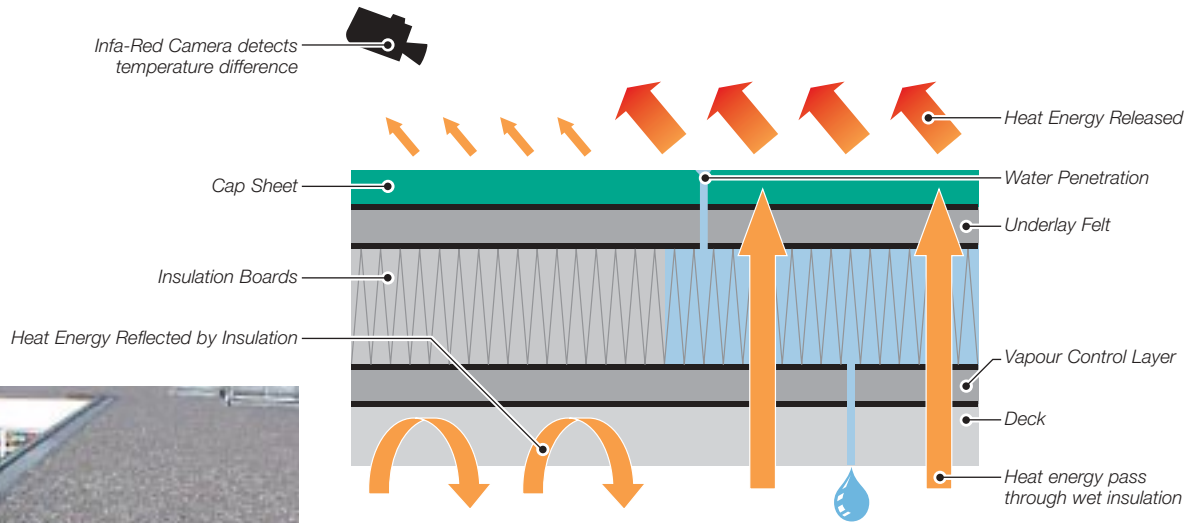


Overleaf: Superior Technology

How TREMCO Roofing Systems ensure superior, long lasting results and deliver an extended service life

TREMCO

SUPERIOR TECHNOLOGY



Thermogram of Leaking Gutter Detail

ACCURATE DIAGNOSIS

THERMOCORE Infra-red investigation technology

When water penetrates a flat roof and enters the building envelope, the accelerated damage begins. The structure - and its contents - are under increasing threat of serious damage, disruption and escalating costs.

The causes can range from mechanical damage or structural movement to wind uplift, UV radiation or poor design and detailing. If such a problem is suspected, urgent investigation is vital.

Visual inspection is never enough. While the actual source of the defect may or may not be visible, the true extent of the problem certainly cannot be seen.

Conventional techniques involve physical sampling of suspect roof areas; however, this requires penetration of the waterproof membrane - and the risk of compromising otherwise sound areas. The extent of water ingress and spread within the roofing layers cannot be accurately defined.

As a remedy, patching is notoriously unreliable because other problem areas may remain. Another option - overlaid waterproofing - risks sealing in trapped water which can continue to cause structural damage and deterioration. Only total replacement can guarantee renewed integrity if the full extent of the problem cannot be accurately determined.

Non-invasive survey

- TREMCO Thermocore infra-red analysis is comprehensive and non-invasive
- The camera measures the difference in thermal conductivity across the roof
- Where water has penetrated and spread, insulation efficiency is reduced, allowing heat to escape - and these areas show up as hot spots
- All defective areas are therefore quickly and confidently identifiable
- Affected areas can be fully and accurately marked out for localised repair and renovation

The visual and Thermocore surveys, combined with subsequent core sampling of suspect areas, and TREMCO experience, adds up to the most accurate and comprehensive condition survey available for any flat roof.

TREMCO Roofing Systems include the latest, advanced technology to ensure renewed integrity, even in extreme conditions

EXCEPTIONAL BONDING

THERMASTIC Elastomer modified bitumen adhesive

The non-elasticity of conventional bitumen bonding adhesives differs from that of the roofing felts. In time, they oxidise and become brittle, and can no longer accommodate building movement or the flexing of roofing felts which they are bonding together.

Repeated temperature cycles lead to de-bonding from the underlying roof substrate and delamination between felt layers. Waterproofing integrity is lost.

Unique BBA certification

- TREMCO Thermastic polymer-modified bitumen bonding adhesive remains flexible, waterproof and well-bonded to deck and roofing elements
- It acts as an additional waterproofing membrane for each layer of use
- It is the ONLY built-up roofing adhesive to hold independent BBA certification

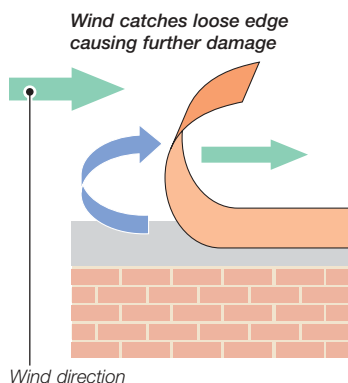
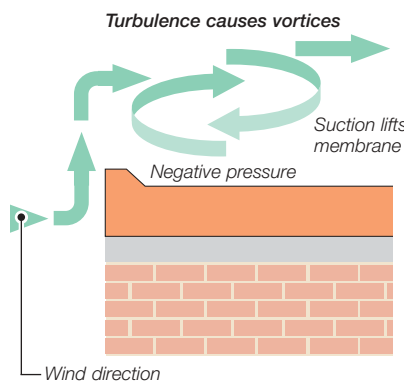
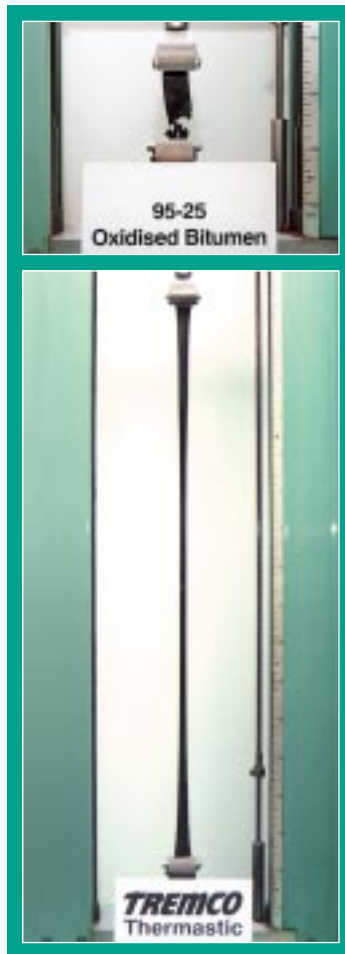
HIGH WIND LOAD RESISTANCE

BRE Wind uplift testing

All roofs are vulnerable to damage in high winds. If the bonding of the waterproofing membrane is weak, wind action can lift the edge of the roofing away from the roof deck and expose the roof to further damage.

BRERWULF tested

- The TREMCO HI-THERM system was tested by the BRE on its BRERWULF test rig
- Results showed exceptional performance against wind uplift: test rig failed before roofing system exhibited any damage
- Tested to 1.5 times the wind-loading measure in cyclones: in excess of -6.25kPa (= twice the maximum expected in UK)



ELASTOMERIC SYSTEM

HI-THERM Hot-applied elastomeric roofing system

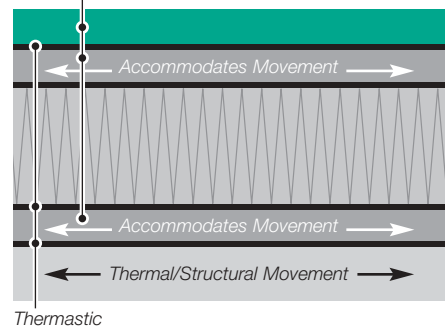
In less sophisticated systems, flexibility in the roofing felts and the bonding adhesive is not consistent or sustained. Accordingly, the service life of the roof is subject to earlier failure with its attendant costs of repair or replacement.

Fully-flexible bonded layers

- TREMCO HI-THERM system comprises compatible layers of high performance elastomeric felts, bonded together with Thermastic adhesive
- This ensures a fully flexible system throughout the complete built-up roofing layers

HI-THERM System

Elastomeric Felts



Overleaf: Proven Systems

The TREMCO systems that ensure complete roofing integrity and longer service life

TREMCO

PROVEN PRODUCTS

The first class results you need

The comprehensive TREMCO portfolio of roofing products and systems is available to create new built-up roofing - or to diagnose, repair and renew a defective roof - and to secure its integrity in every detail.

For survey of suspect areas

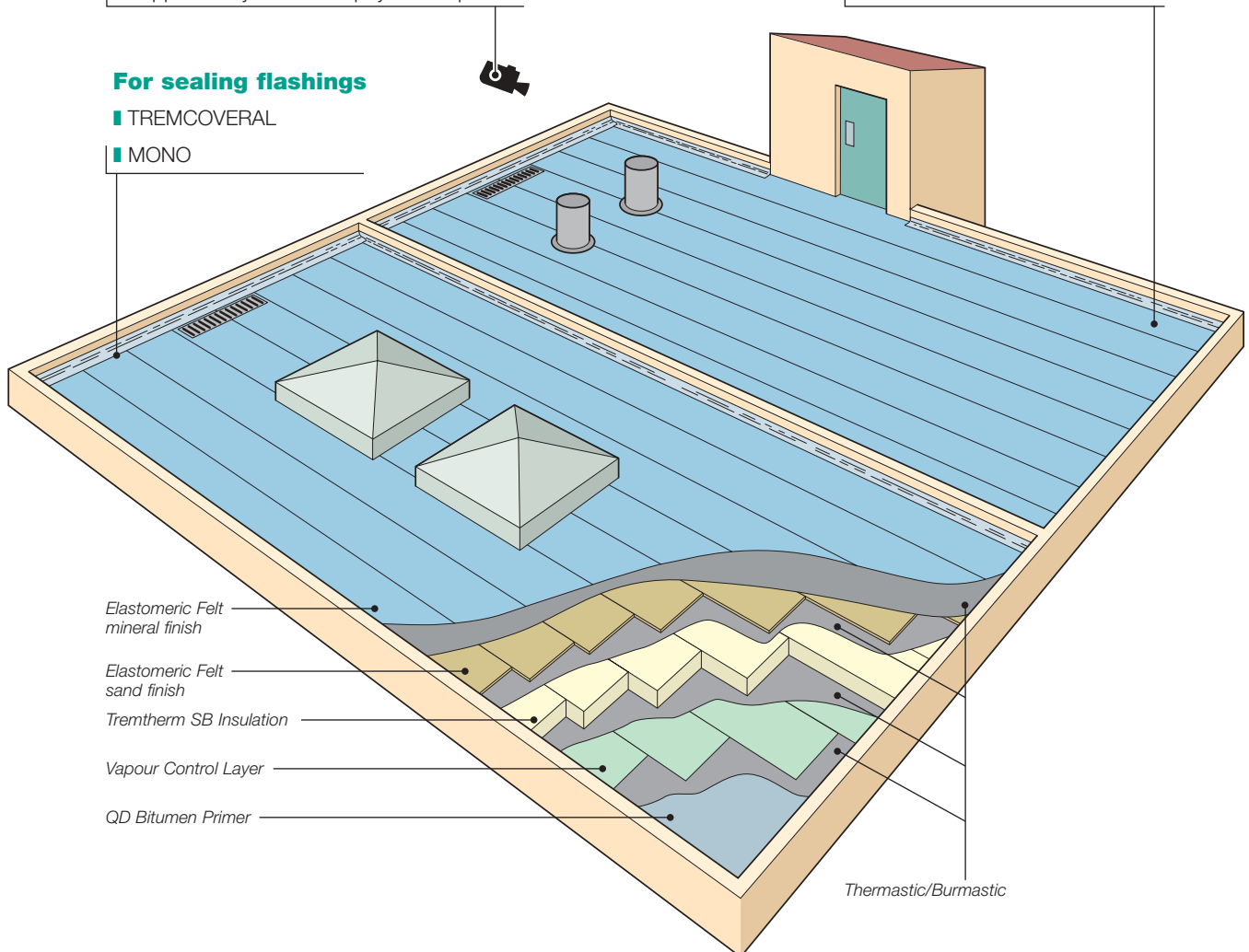
- THERMOCORE Infra-red Technology - Supported by visual and physical inspection

For sealing flashings

- TREMCOVERAL
- MONO

For new or replacement roofing

- HI-THERM (Hot-applied) system
- HI-TREM NFR (Cold-applied) system
- TREMTHERM SB Insulation board
 - Cut to falls or standard thickness
- ELASTOMERIC FELTS
 - Sand/mineral finish
 - Underlayment/cap sheet
 - High performance single ply felt
 - Torch-on felts



For roofmat bonding

- THERMASTIC
- BURMASTIC (cold-applied)

For reconditioning

- WEATHERMAT
- ALUMINISER

For repairs

- FIBERMAT

DIAGNOSIS

Thermocore

Infra-red scanning technology for identifying defective areas in flat roofing

- Defines location and extent of any suspect areas

REPAIR

Fibrecoat

Fibre-reinforced, multi-purpose repair material

- For repairing splits, cracks and leaks in existing roofmat

Tremcoveral

Elastomeric sealing mastic

- For sealing flashings, roof edgings and other areas subject to critical movement

Mono

Weather-resistant flexible sealant

- For resealing of old sealant joints, including exterior perimeter joints around roof access doors

RECONDITIONING

Weathermat

Single component weatherproofing compound

- Fibre-reinforced for extra strength
- Excellent workability and adhesion

Aluminiser

Aluminium reflective protective coating

- For extra protection of bitumen roofing
- Reflects 85% of solar radiation from roof surface
- Extends roof life: reduces oxidation and embrittlement

NEW & REPLACEMENT

Thermastic

Elastomeric bitumen bonding adhesive

- Exceptional adhesion
- BBA certificated and BRE wind uplift tested

Burmastic

Cold-applied bitumen adhesive

- Fibre-reinforced
- Simple and safe application

QD Bitumen Primer

Primer for bituminous surfaces

- Primes and conditions existing roof surfaces for subsequent bituminous coatings or membranes

Elastomeric Felts

High performance elastomeric felts

- Compatible with **Thermastic** and **Burmastic** adhesives
- Part of TREMCO hot-applied and cold-applied systems

Elastomeric Single Layer Felts

Heavy duty elastomeric felts

- For extra weather resistance
- Highly durable
- Compatible with **Thermastic** adhesive

Elastomeric Torch-On Felts

Elastomeric felts for detailing

- Rapid, secure adhesion
- Polyester core for strength and tear resistance

Tremtherm SB

High performance rigid insulation board

- Designed for use with fully-bonded systems
- CFC/HCFC free urethane, with coated glass fibre facing

BUILT-UP SYSTEMS

HI-THERM

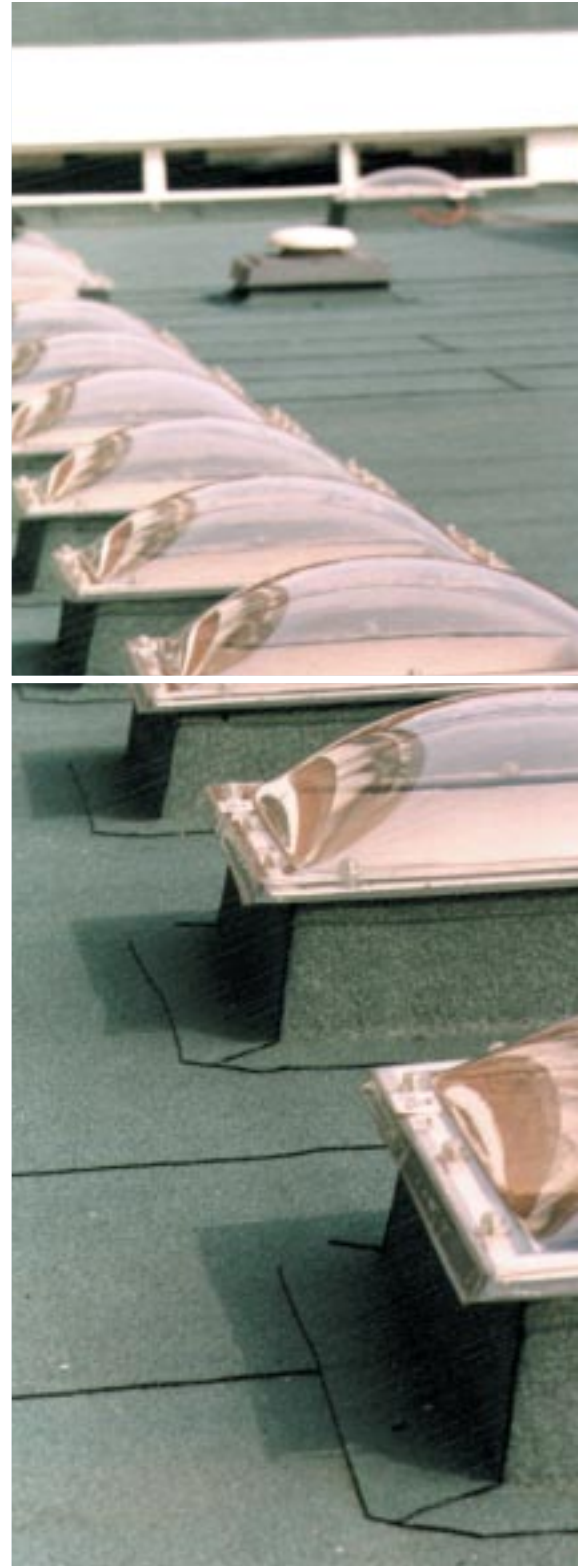
Hot-applied roofing system

- Incorporating **Thermastic** bitumen bonding adhesive
- BBA certificated system
- Exceptional adhesion and flexibility
- Outstanding resistance to wind uplift

HI-TREM NFR

Cold-applied, self adhesive roofing system

- Safe and easy application: no naked flame on site
- Exceptional weatherability



Product Summary

For full system and product details, features and performance benefits, see relevant product data sheet(s), available on request from TREMCO
01753 691696

TREMCO

TECHNICAL SERVICES

TREMCO offers expert advice and design guidance at every stage of a project, from initial survey to planned maintenance.

Our support services include:

- Experienced on-site surveying and monitoring
- Specification assistance
- Direct, on-call advice
- TREMCO Online:
www.tremcoeuropa.com

For detailed information on TREMCO products, or to arrange a meeting with a TREMCO representative to discuss your specific requirements, contact us on:

TELEPHONE: 01753 691696

FACSIMILE: 01753 822640

TREMCO ROOFING SYSTEMS

WORLDWIDE EXPERIENCE PROVIDING TOTAL RELIABILITY

By specifying TREMCO Roofing Systems, you will be tapping into the expertise and dependability of a major international company. TREMCO has a multi-million dollar worldwide annual turnover, and is supported by the multi-billion dollar RPM Group.

TREMCO experience now extends over 70 years, with an enviable reputation for technical innovation, reliable quality and performance excellence. In addition to those described in this brochure, our full portfolio of outstanding products and systems includes:

SEALANTS FOR

- Construction Joints
- Insulating Glazing
- Architectural Glazing
- Industrial Applications

COATINGS FOR

- Deck Waterproofing
- Floors
- Sterile Areas/Clean Rooms
- Concrete Repair
- Industrial Flooring

ADHESIVES FOR

- Industrial Applications
- Flooring Applications

CONFIDENCE BEYOND EXPECTATION



FM 01764

TREMCO LIMITED – A company approved to BS EN ISO 9001: 2000

TREMCO, BURMASTIC, FIBERMAT, THERMOCORE, TREMCO THERMASTIC, TREMCO WEATHERMAT and MONO are Registered Trade Marks

PUBLISHED BY TREMCO, July 2005 T2103

An **RPM** Company

TREMCO

Tremco Limited (European Headquarters)

393 Edinburgh Avenue, Slough, Berkshire SL1 4UF UK

Tel: +44 (0)1753 691696 Fax: +44 (0)1753 822640

Website: www.tremcoeuropa.com