

# City Cruise Passenger Terminal

Southampton

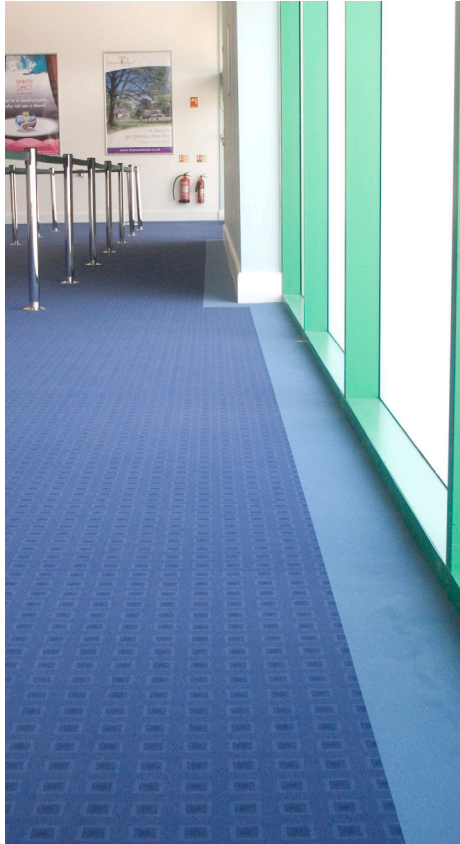
Following a £9m expansion and refurbishment project, the new Southampton City Cruise Terminal opened its doors to passengers on 27th April 2007.

Managed by the Association of British Ports, the terminal is now fully equipped to host even the largest of today's modern cruise ships, and some of the 800,000 passengers expected through Southampton ports in 2007.

Warings Construction Group chose Beveridge Flooring as the flooring contractor for the entire project - nearly 4,000 m<sup>2</sup> of JHS carpet, Flotex carpet and Altro Maxis safety flooring were used.

With a tight schedule to work to, Beveridge Flooring was on-site from the 2<sup>nd</sup> January, with a team of up to 5 floor layers on-site at any one time. Although alternative products were originally specified, Beveridge opted to use the Tremco range of subfloor preparation products for the entire project. Rick Hawkins, Project Manager for Beveridge Flooring said: "We changed the specification to the Tremco system based on their proven track record. We knew they would deliver excellent products that are easy to work with, and provide an excellent level of back-up service."

In total, the project included 1,800 m<sup>2</sup> of JHS Format carpet, 1,500 m<sup>2</sup> of Flotex carpet and 500 m<sup>2</sup> of Altro Maxis safety flooring.



**TREMCO**

# City Cruise Passenger Terminal

Tremco illbruck Limited  
Coupland Road  
Hindley Green, Wigan WN2 4HT UK  
Tel: 01942 251400  
Fax: 01942 251410  
Email: info@tremco-illbruck.co.uk  
Website: www.tremco-illbruck.com

**Project:**  
City Cruise Passenger  
Terminal, Southampton

**Completion Date:**  
April 2007

**Flooring Contractor:**  
Beveridge Flooring

**Main Contractor:**  
Warings Construction  
Group

**Client:**  
Associated British Ports

Tremco is a leading name in the development, manufacture and supply of flooring solutions for contract, commercial and industrial applications. Tremco has developed a range of flooring systems that are easy to apply and deliver consistent, long-lasting performance:

- Damp Proof Membranes
- Smoothing Compounds
- Flooring Adhesives

With over 75 years of experience, a full range of technical specification and on-site support and a reputation for outstanding customer service, Tremco is able to provide tailor-made solutions for the widest range of flooring installations.



To prepare the subfloor, Beveridge Flooring used a different Tremco system for each of the two existing substrates in the building.

Due to a relatively high moisture content, Treadfast One Coat Universal DPM was applied prior to smoothing. The liquid-applied DPM is suitable for floors with a moisture content of up to 97% relative humidity (99.9% theoretical), and provides a controlled moisture barrier between the substrate and the floor covering.

To prepare the power floated concrete base, the cured DPM was primed with Treadfast Epoxyprime Plus and then smoothed using Treadfast Unismooth. This high-strength self-levelling smoothing compound is ideal for large, high pedestrian traffic areas.

In areas where the floor base was sand / cement screed, Treadfast Unitex was selected. With excellent adhesion to a range of materials without the need for additional primer, Unitex proved to be the ideal solution for this project.

**TREMCO**  
**illbruck**